



WATKINS ELEMENTARY *Who should I contact?*



STUDENT LEARNING AND CLASS SUPPORT

Questions or concerns about student learning, student SEL, bullying allegations, class communication, and class visits.

First Contact: Teacher | Next Step: Assistant Principal Edmonds
natalie.edmonds@k12.dc.gov



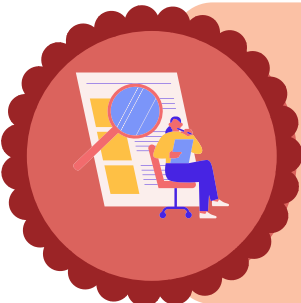
STUDENT SUPPORT

Questions regarding mental health and 504 plans.

First Contact: Social Worker
1st - 3rd: lauren.kraemer@k12.dc.gov
4th & 5th: denzelle.carter-crawley@k12.dc.gov
Next Step: Principal Berkowitz

Questions regarding special education services.

First Contact: Case Manager
Next Step: AP Edmonds
natalie.edmonds@k12.dc.gov



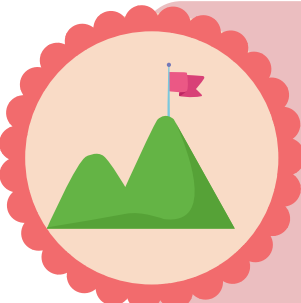
MAIN OFFICE

Questions about attendance, enrollment and other paperwork

First Contact: Ms. Roy
shelia.roy@k12.dc.gov
Next Step: Ms. Montgomery
tanisha.montgomery@k12.dc.gov

Questions about Kids Ride Free cards and student medication

First Contact: Ms. Carraway
terrie.carraway@k12.dc.gov
Next Step: Ms. Montgomery
tanisha.montgomery@k12.dc.gov



SAFETY & OTHER SENSITIVE TOPICS

Questions or concerns regarding safety in and around school grounds and other sensitive topics.

First Contact: Principal Berkowitz
Next Step: Instructional Superintendent Caruthers or DCPS CARE
andria.caruthers@k12.dc.gov or dcps.care@k12.dc.gov



SCHOOL FACILITIES AND OPERATIONS

Facility concerns, technology, ASL or other interpretation services, field trips, medication, volunteer clearance, and school event requests.

First Contact: Ms. Montgomery | Next Step: Principal Berkowitz
tanisha.montgomery@k12.dc.gov mscott.berkowitz@k12.dc.gov



ATHLETICS

Questions about sports participation, coaches, and tryouts.

First Contact: Ms. Drakeford-Allen | Next Step: Principal Berkowitz
latavia.drakeford-allen@k12.dc.gov mscott.berkowitz@k12.dc.gov